

Appendix B

Environmental Protection (Darling Range Bauxite Mining Proposals) Exemption Order 2023

Alcoa Monthly Report
Clause 10

December 2024



Monthly Reporting Dashboard – Page 1

Section 10 Monitoring Potential Drainage Incidents

Turbidity Data		Drainage Incidents	
Site	No. Active Monitors ¹	Site	No. Events (December-24) ²
Huntly	40	Huntly	0
Willowdale	4	Willowdale	0
Total	44	Total	0

¹ Refers only to monitors located in areas covered by the Exemption Order.

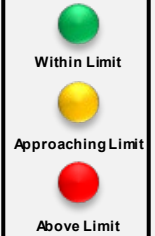
² Potential Events - Currently being investigated in accordance with section 6(2) of the Exemption Order to determine whether any of the events were mining related.

Section 2 – Clause 10 2(c) (i) Production and Exploration Summary

Production (HUN and WDL)	Month (Dec-24)	YTD (CY)	Limit	Status
Production Tonnes Huntly	1.4	19.8		
Production Tonnes Willowdale	1.0	10.5		
Total Bauxite Production Tonnes	2.4	30.3	38 MT	

Exploration	Month (Dec-24)	YTD (CY)	Limit	Status
Total Exploration Holes	3,648	61,009	105,000	

Legend



Section 3 Clause 10 2(c) (i) and Clause 10 2(c) (iii) Activities Summary and Forecast

Area	December 2024			January 2025			February 2025		
	*Cleared	Stabilised	Seeded	*Clearing	Stabilised	Seeded	*Clearing	Stabilised	Seeded
Huntly									
Total HUN Mine Disturbance Footprint (ha)	29.16	18.38	23.71	14	22	43	17	8	41
Willowdale									
Total WDL mine disturbance footprint (ha)	0	6.44	0	0	0	10.9	0	0	39.3

Definitions

- Cleared – disturbance to native vegetation and other flora
- Stabilised– in relation to an area that has been disturbed, means carry out appropriate operations to prevent erosion of sediment, promote infiltration and manage surface water runoff
- Seeded – landform established and seeding complete

* Clearing only considers completed hectares

Monthly Reporting Dashboard – Page 2

Section 4 – Clause 2(c) (ii) Activities Ceased during the Period for Huntly

Area	December 2024		
	Haul Roads ^(a)	Infrastructure ^(b)	Mining
Within 1km Reservoir (ha)	0	0	0
Serpentine Pipehead Dam Catchment (ha)	0	0	0
Within RPZ and >16% average slope (ha)	0	0	0
Within 10m of BC nesting/significant trees (ha)	0	0	0

Definitions

- (a) Haul roads includes road infrastructure
- (b) Infrastructure includes drainage control, mining and monitoring infrastructure

Maps for Huntly

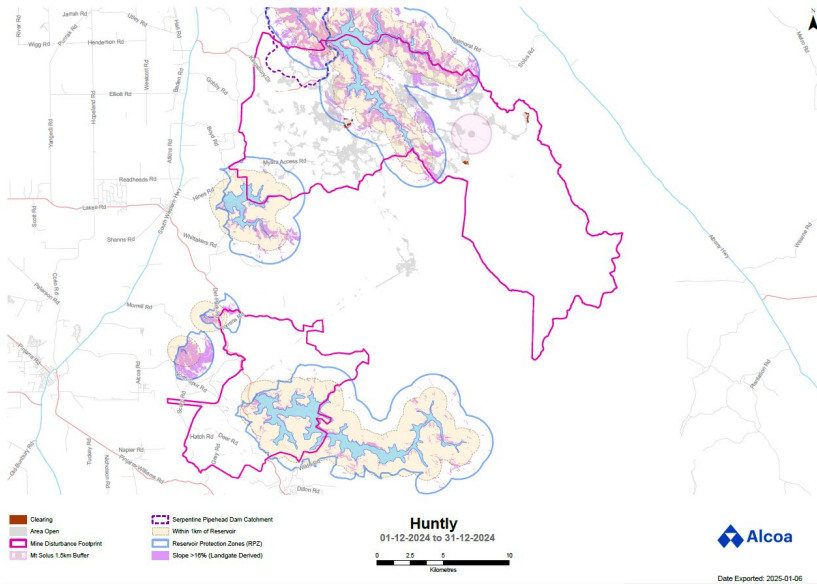
No cessation activities to report this month

Maps for Willowdale

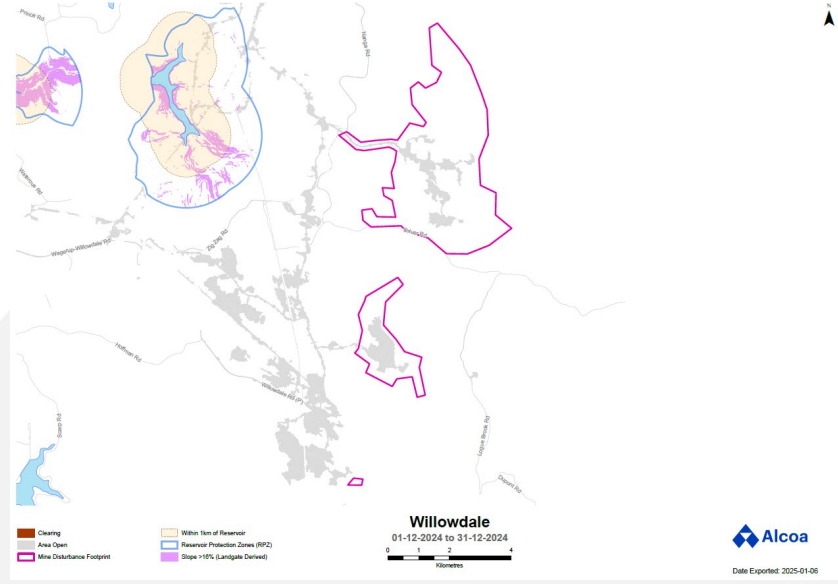
Cessation of mining activities in the above-mentioned areas is not applicable to the Willowdale mine

Appendix A – Monitoring Results

Huntly

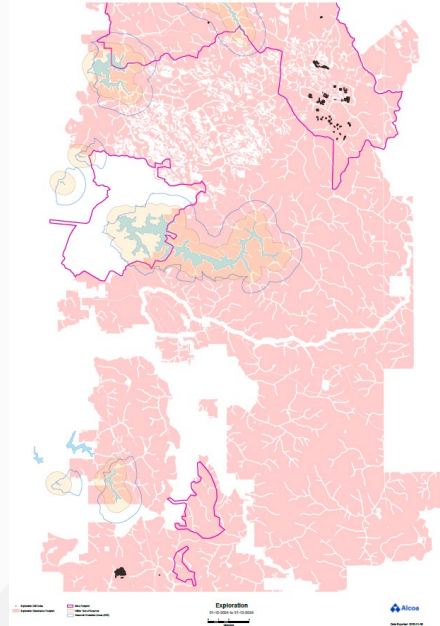


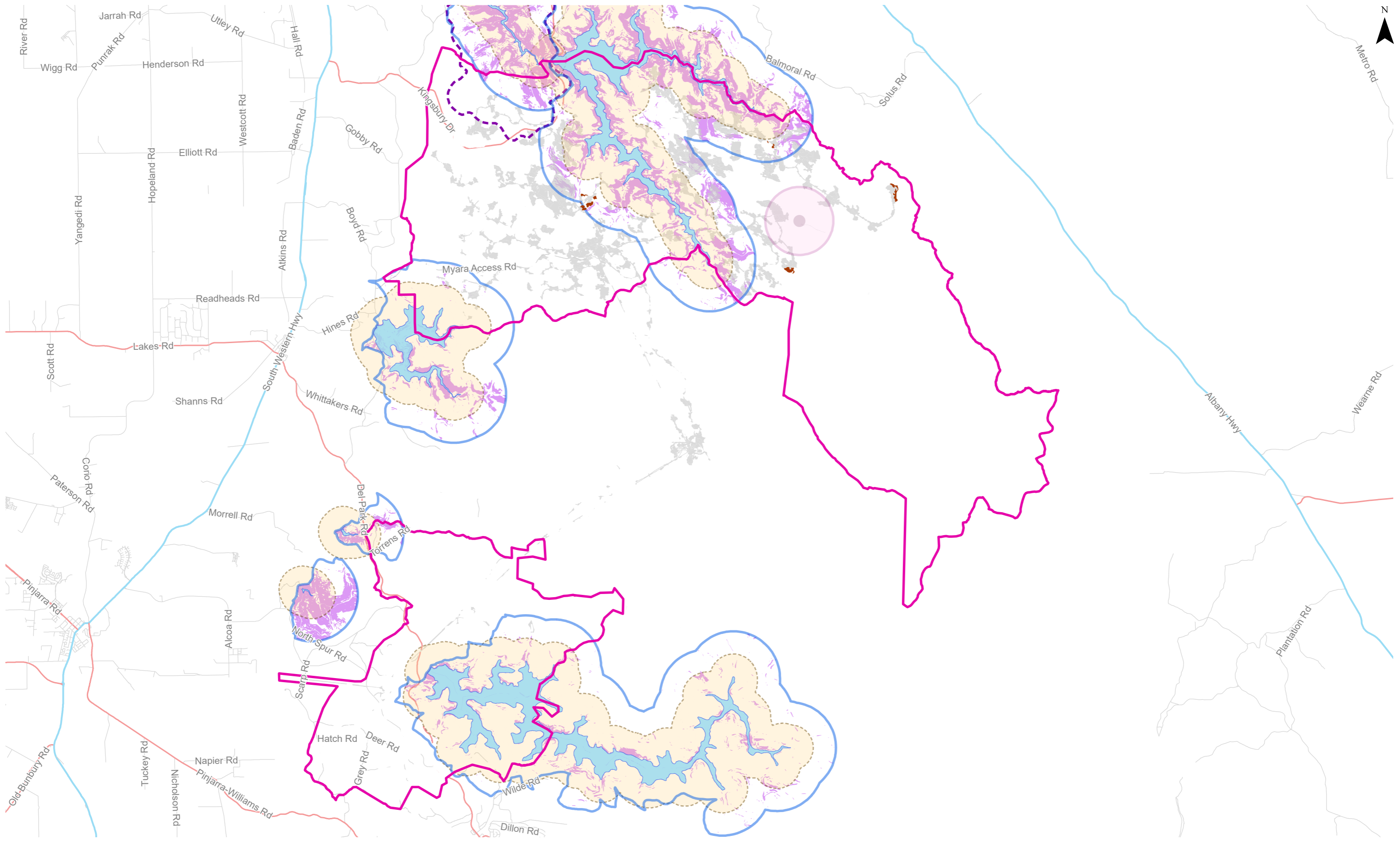
Willowdale



Appendix A – Monitoring Results

Exploration

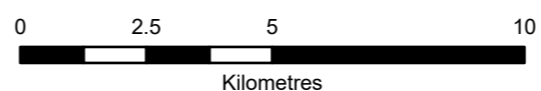


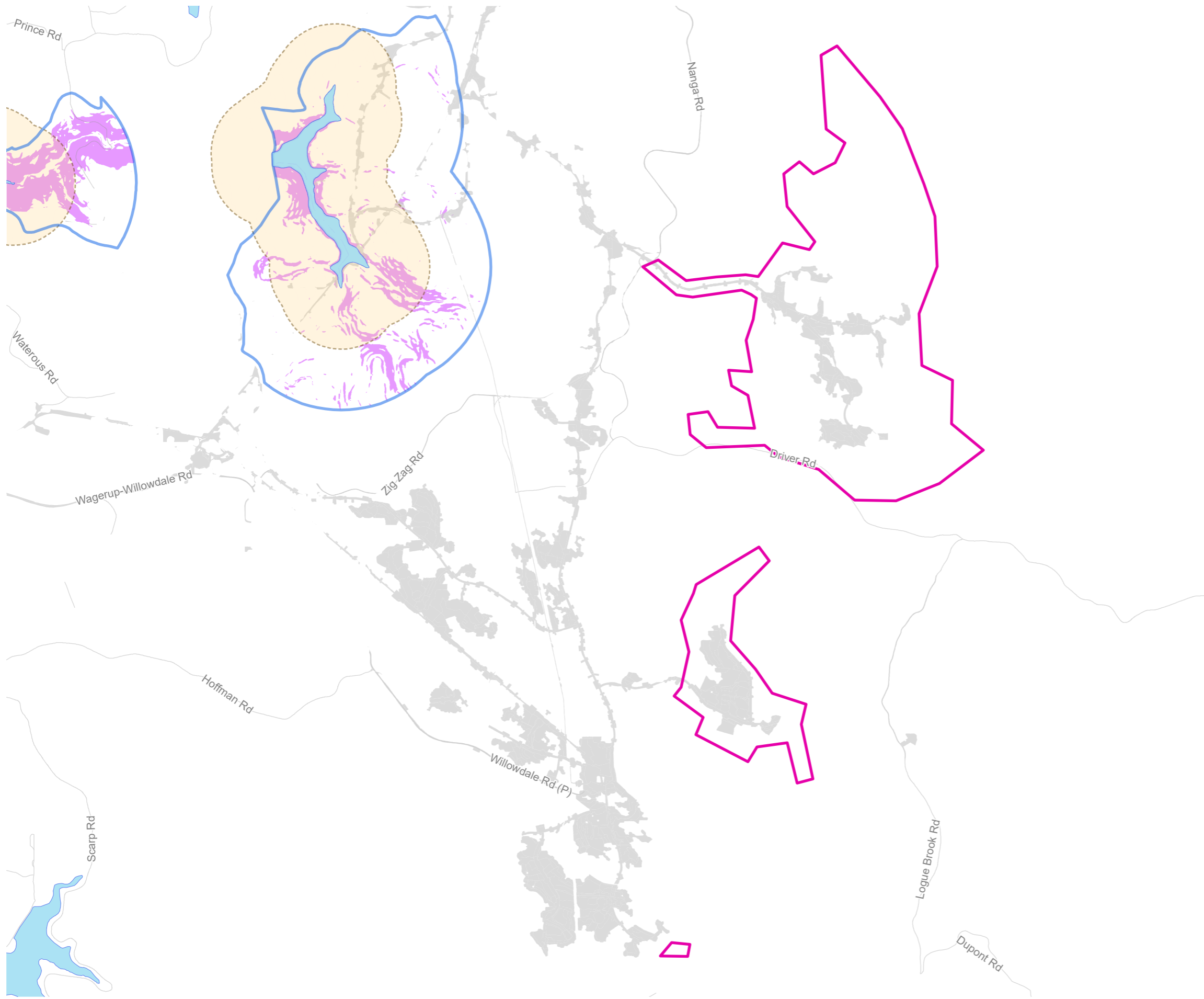


- Clearing
- Area Open
- Mine Disturbance Footprint
- Mt Solus 1.5km Buffer
- Serpentine Pipehead Dam Catchment
- Within 1km of Reservoir
- Reservoir Protection Zones (RPZ)
- Slope >16% (Landgate Derived)

Huntly

01-12-2024 to 31-12-2024



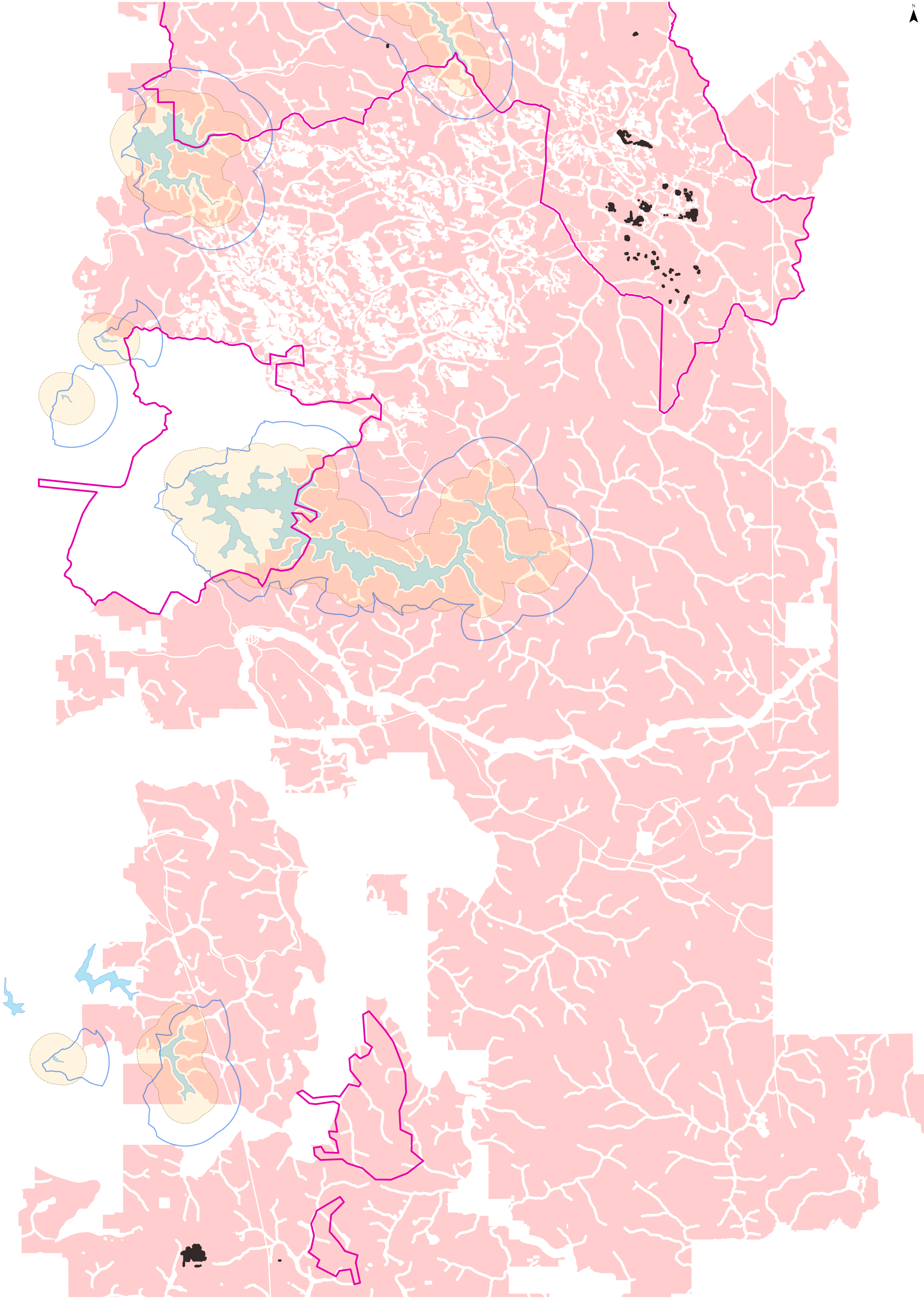


- Clearing
- Area Open
- Mine Disturbance Footprint
- Within 1km of Reservoir
- Reservoir Protection Zones (RPZ)
- Slope >16% (Landgate Derived)

Willowdale
 01-12-2024 to 31-12-2024

0 1 2 4
Kilometres





- Exploration Drill Holes
- Exploration Disturbance Footprint
- Mine Footprint
- Within 1km of Reservoir
- Reservoir Protection Zones (RPZ)

Exploration

01-12-2024 to 31-12-2024

