

Environmental Protection (Darling Range Bauxite Mining Proposals) Exemption Order 2023

**Alcoa Monthly Report
Clause 10**

July 2024



Monthly Reporting Dashboard – Page 1



Section 10 Monitoring Potential Drainage Incidents

Turbidity Monitors		Drainage Incidents	
Site	No. Active Monitors ¹	Site	No. Events (July-24) ²
Huntly	33	Huntly	3
Willowdale	3	Willowdale	0
Total	36	Total	3

¹ Refers only to monitors located in areas covered by the Exemption Order.

² Potential Events - Currently being investigated in accordance with section 6(2) of the Exemption Order to determine whether any of the events were mining related.

Section 2 – Clause 10 2(c) (i) Production and Exploration Summary

Production (HUN and WDL)	Month (July-24)	YTD (CY)	Limit	Status
Production Tonnes Huntly	1.4	12.3		
Production Tonnes Willowdale	0.9	5.7		
Total Bauxite Production Tonnes	2.3	18	38 MT	

Exploration	Month (July-24)	YTD (CY)	Limit	Status
Total Exploration Holes	0	45,692	105,000	

Legend



Within Limit



Approaching Limit



Above Limit

Section 3 Clause 10 2(c) (i) and Clause 10 2(c) (iii) Activities Summary and Forecast

Area	July 2024			August 2024			September 2024		
	*Cleared	Stabilised	Seeded	*Clearing	Stabilised	Seeded	*Clearing	Stabilised	Seeded
Huntly									
Total HUN Mine Disturbance Footprint (ha)	22.7	0	0	21.6	0	0	1.6	0	0
Total WDL mine disturbance footprint (ha)	0	0	0	0	0	0	0	0	0

Definitions

- Cleared – disturbance to native vegetation and other flora
- Stabilised– in relation to an area that has been disturbed, means carry out landscaping, ripping and other appropriate operations to prevent erosion of sediment, promote infiltration and manage surface water runoff
- Seeded – landform established and seeding complete

* Clearing only considers completed hectares

Monthly Reporting Dashboard – Page 2



Section 4 – Clause 2(c) (ii) Activities Ceased during the Period for Huntly

Area	July 2024			Definitions (a) Haul roads includes road infrastructure (b) Infrastructure Includes drainage control, mining and monitoring infrastructure
	Haul Roads ^(a)	Infrastructure ^(b)	Mining	
Within 1km Reservoir (ha)	0	0	0	
Serpentine Pipehead Dam Catchment (ha)	0	0	0	
Within RPZ and >16% average slope (ha)	0	0	0	
Within 10m of BC nesting/significant trees (ha)	0	0	0	

Maps for Huntly

No cessation activities to report this month

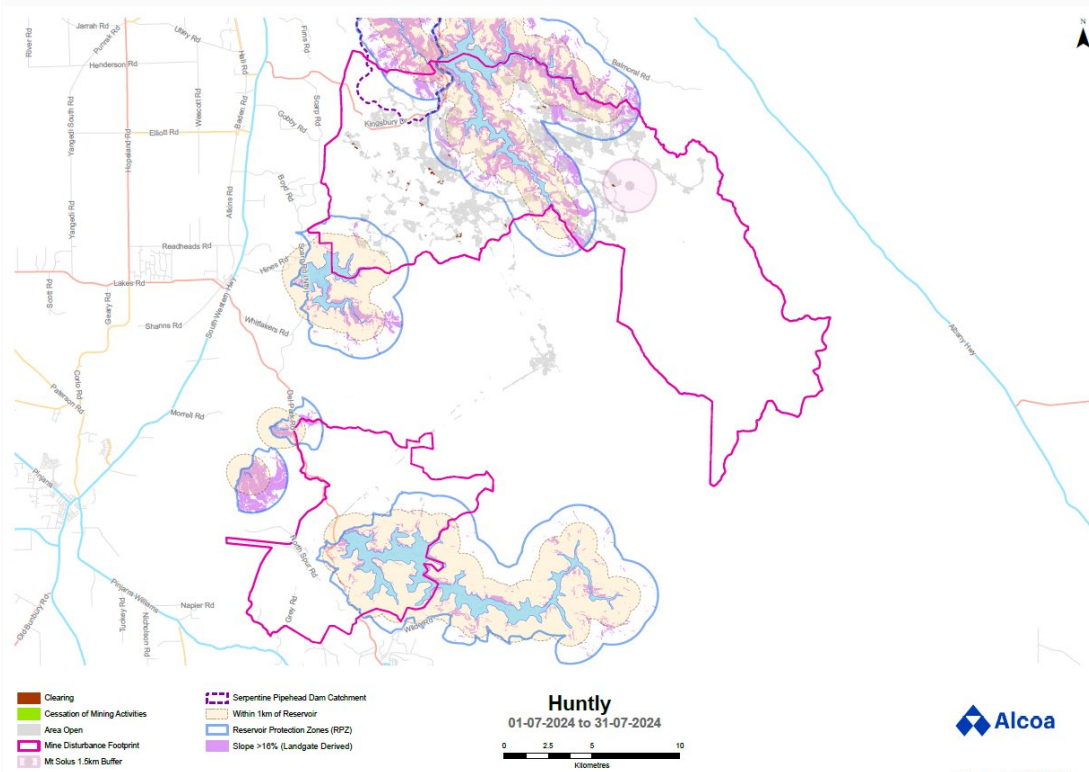
Maps for Willowdale

Cessation of mining activities in the above-mentioned areas is not applicable to the Willowdale mine

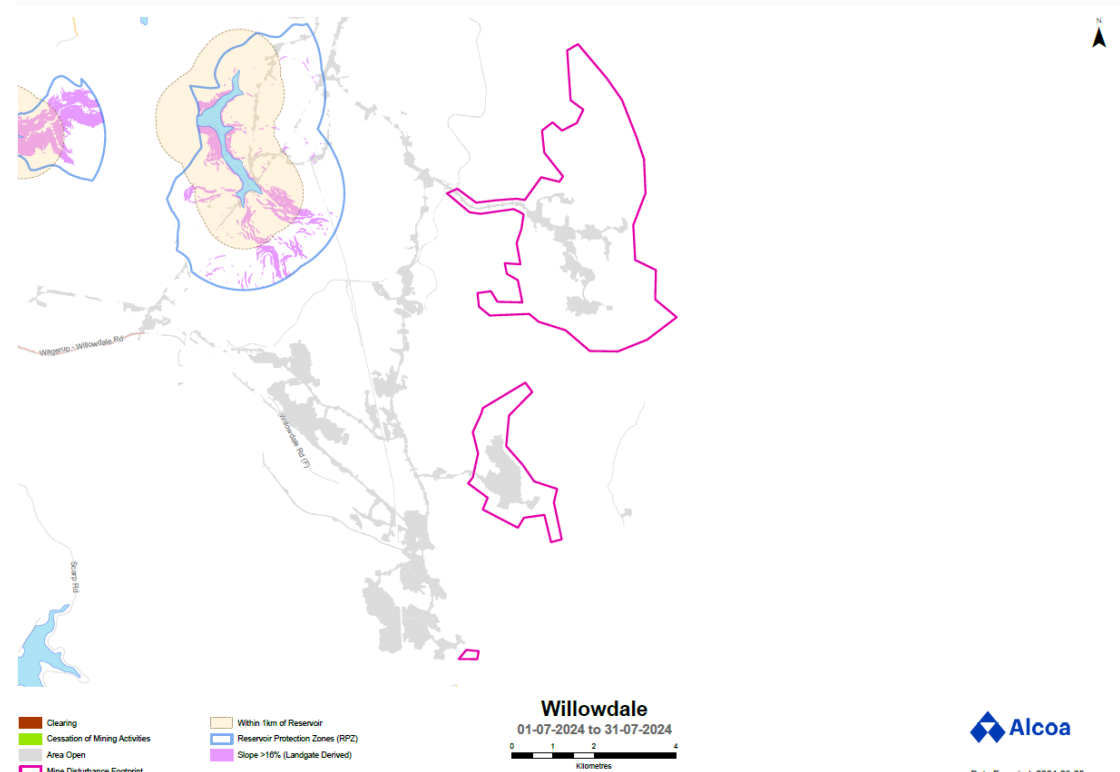
Appendix A – Monitoring Results



Huntly

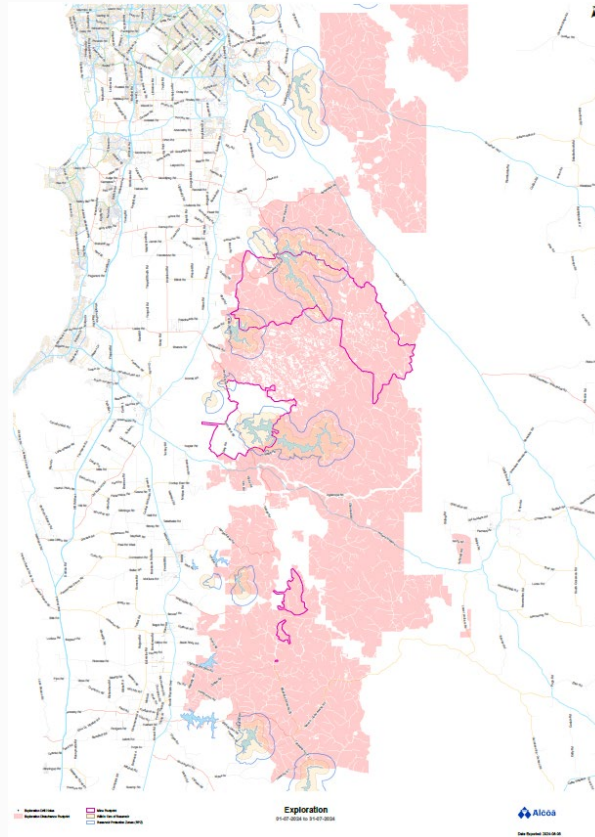


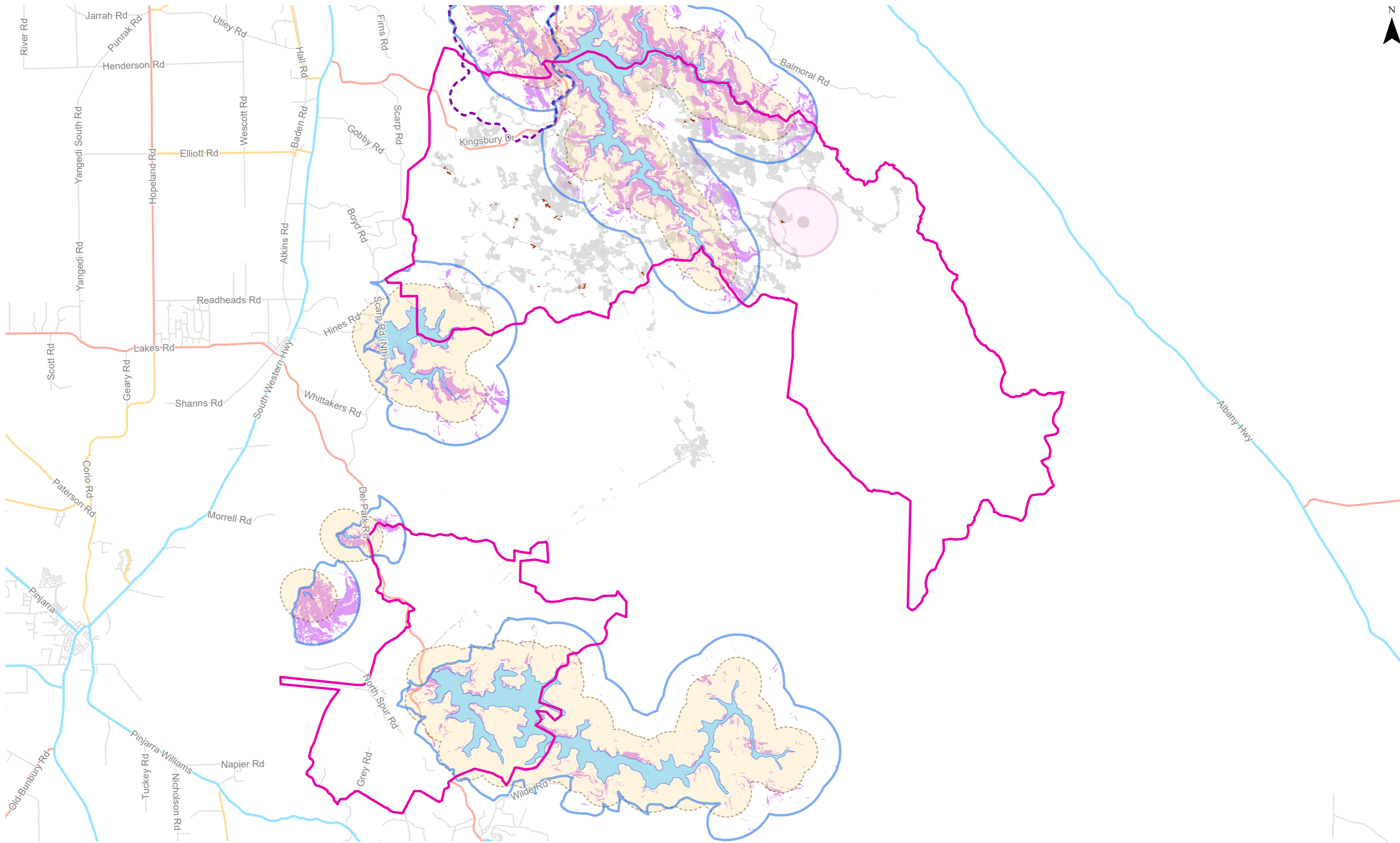
Willowdale



Appendix A – Monitoring Results

Exploration



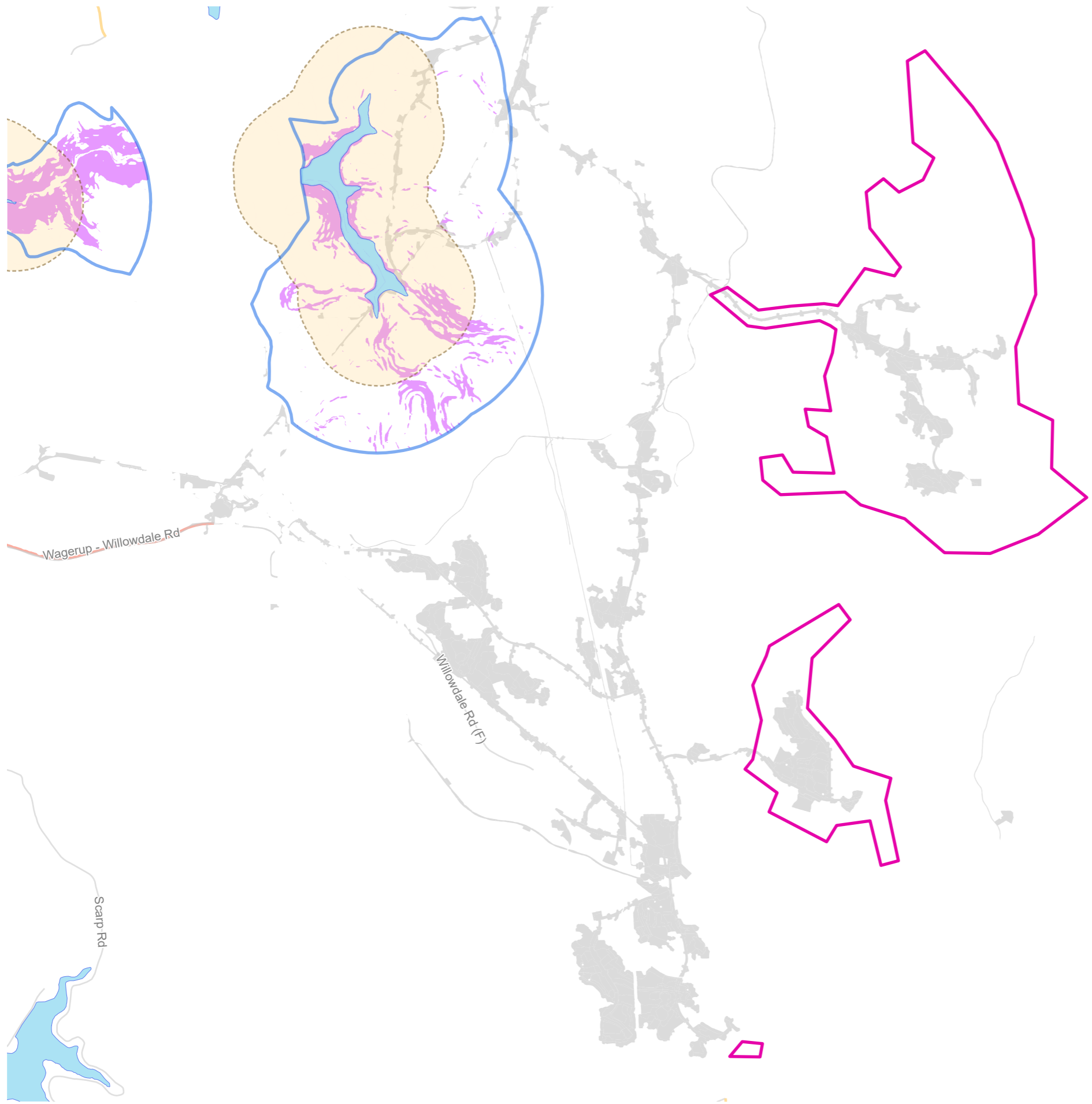




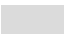

- Clearing
- Cessation of Mining Activities
- Area Open
- Mine Disturbance Footprint
- Mt Solus 1.5km Buffer
- Serpentine Pipehead Dam Catchment
- Within 1km of Reservoir
- Reservoir Protection Zones (RPZ)
- Slope >16% (Landgate Derived)




Huntly
01-07-2024 to 31-07-2024

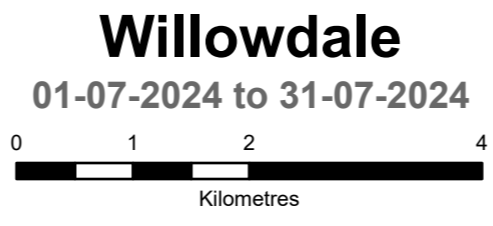
0 2.5 5 10
Kilometres

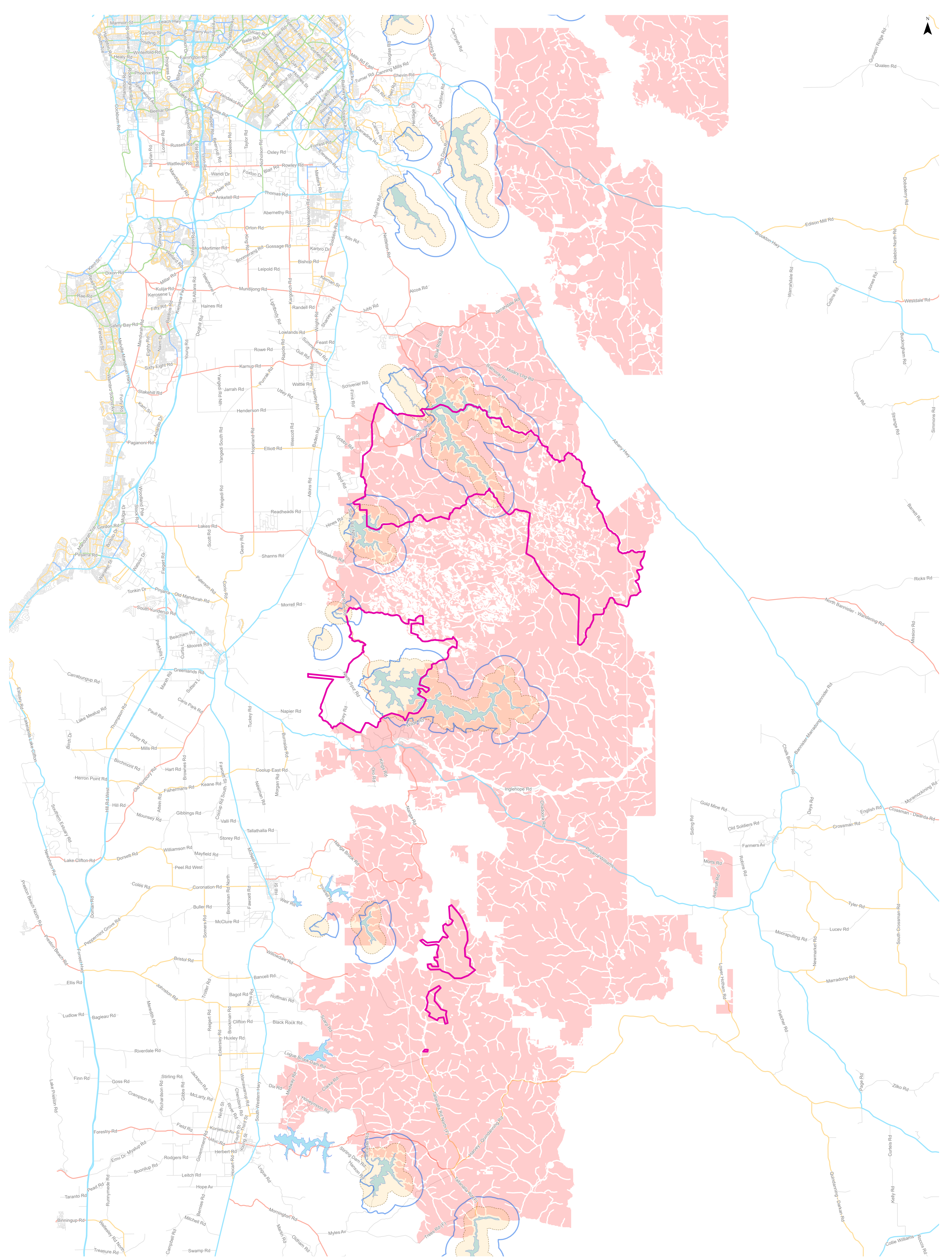




-  Clearing
-  Cessation of Mining Activities
-  Area Open
-  Mine Disturbance Footprint

-  Within 1km of Reservoir
-  Reservoir Protection Zones (RPZ)
-  Slope >16% (Landgate Derived)





- Exploration Drill Holes
- Exploration Disturbance Footprint
- Mine Footprint
- - - Within 1km of Reservoir
- - - Reservoir Protection Zones (RPZ)

Exploration
01-07-2024 to 31-07-2024

