

ALCOA ANGLESEA COMMUNITY CONSULTATION NETWORK

JUNE 2018 MEETING SNAPSHOT

Meeting purpose: A CCN meeting was held on 18 June to provide an opportunity for CCN attendees to discuss the site's decommissioning and rehabilitation and the ongoing community engagement processes.



Introduction

The meeting was independently facilitated by Jen Lilburn. 55 people attended, including representatives from community, local and state government, local authorities and Alcoa.

FIGURE 1

Power Station Demolition

Warren Sharp (Anglesea and Point Henry Site Asset Manager) expressed Alcoa's disappointment at the power station demolition attempt on Wednesday 30 May. He explained that Industrial Demolition Services (IDS) and Precision Demolition were engaged as the demolition contractors. The bunkers on the right-hand side of the building and the coal conveyor (on the left-hand side) fell off as planned. However, the building did not collapse as intended. Figure 2 shows the before and after shots of the structure.

The demolition method involved pre-cutting the approximately 900mm² weight-bearing columns within the structure, combined with a linear cutting explosive charges to complete the cuts. A kick charge was supposed to then 'kick out' the cut sections, thereby collapsing the building due to gravity. The charges were visually inspected following the event and whilst it was confirmed that they all detonated, they did not 'kick' any of the cut sections out and the structure merely 'sat down'.

The charges were visually inspected following the event and whilst it was confirmed that they all detonated, they did not 'kick' any of the cut sections out and the structure merely 'sat down'.

The Principal Contractor is currently working through the reasons for the failure and is undertaking technical assessments which will inform the approach required to complete the demolition.

Whilst the demolition was unsuccessful, there were no injuries and the activity was compliant with EPA and WorkSafe requirements.

A number of questions, concerns and comments were raised regarding the demolition attempt, including:

- *Did the EPA and WorkSafe monitor air quality during the demolition attempt?*
- *Why did it occur 35 minutes later than the 3-hour window (9am-12pm) indicated?*
- *What is the stability of the current structure and does it pose any safety risks?*

Power Station Demolition Update

[Video Link](#)

- Attempted explosive controlled felling on 30 May at 12:35pm achieved only partial collapse, including the coal conveyor and coal bunkers.
- A 400m exclusion zone controlled by security and sentries was in place.
- The demolition activity was completed safely – there were no injuries.
- The activity was compliant with both the EPA and WorkSafe notifications.
- It has been confirmed that all explosive charges detonated. Whilst columns were successfully cut with linear charges they were not effectively 'kicked out'.



FIGURE 2

In response, Warren advised that EPA and WorkSafe did not monitor air quality during the demolition activity. However, Alcoa undertook extensive monitoring on the day. The weather conditions on the previous day were such that Precision Demolition did not get as much of the pre-wiring and pre-weakening completed as they had anticipated and had to finish those works early on the demolition day as well as do final system checks to ensure safety of personnel. This delay meant that the actual demolition event occurred just outside the 3-hour window.

Detailed structural engineering assessments undertaken since the event have indicated that the load, the structural members that remain in place and the frictional forces at play have resulted in a structure that remains robust and can withstand winds up to 140 kph. A further (third) assessment is planned to be completed to provide further confidence.

Concerns specifically relating to the particular wind conditions on the day included:

- *Why were the north to northwest wind conditions on the day of the event considered appropriate when the dust plume would pass across the school, industrial estate and towards the township?*
- *Why was such a fine window considered acceptable? How did you know that the wind wasn't going to change even slightly and send the plume over the township?*
- *There is footage that shows the dust passing over the school and towards school camp facilities and the town.*
- *Why did you not reduce the risks considerably by waiting for southwesterly or even easterly wind conditions?*

In response, Warren advised that Alcoa was monitoring wind direction at several locations on the day and was satisfied that the wind direction would not - and did not - take dust towards the town. Warren advised that Alcoa will consider the feedback when planning the remaining demolition works and agreed that southwesterly conditions would be ideal.

Warren outlined the monitoring processes that occurred during the event. Figure 3 shows the direction of the dust plume (blue line), the asbestos monitoring points after the event (green dots), and the locations of sentries (yellow dots) to ensure that no one penetrated the exclusion zone (shown as a red circle) and to monitor the event pre and post including visually tracking the dust. The dust plume was visually tracked and, despite reports after the event, it did not go towards the school.

Warren outlined the asbestos identification and removal process that occurred prior to the demolition event. He also outlined the OH&S regulations pertaining to asbestos and a summary of the monitoring results generated on the day of the event. He stated that the asbestos identification and removal process undertaken met or exceeded the regulations, and that no levels of asbestos had been detected since the demolition event.

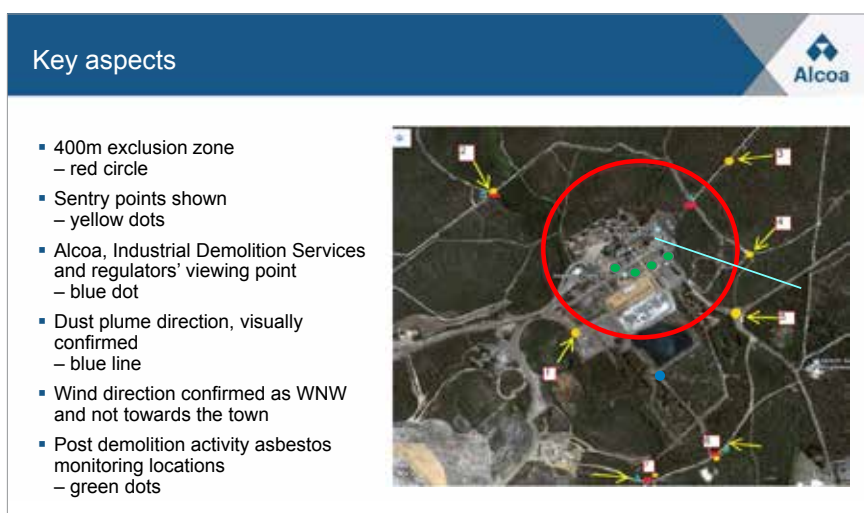


FIGURE 3

Questions/comments relating to asbestos included:

- *Following the removal process, how confident were you that you had removed all of the asbestos?*
- *What were the elevations of the monitoring stations during and following the demolition event?*
- *Given that it is possible that small amounts of asbestos remained in the building following the asbestos removal process, why was explosive demolition determined to be the most appropriate demolition method rather than chopping it down in sections?*

In response, Warren stated that Alcoa removed almost 1000m³ of asbestos during the removal process. To date, no levels of asbestos have been detected since the demolition event but, should this change, Alcoa will communicate this to the community. The monitoring points (yellow and green dots) were at ground level but different elevations depending on the topography. Explosive initiated collapse is considered to be world's best practice for this type of activity as it is the method of lowest risk compared to long periods working at significant height.

Questions and comments regarding the notification process included:

- *What was the notification process for the demolition? I didn't receive any notification. Some people don't read the local newspapers and aren't members of community groups*
- *There were articles in the local newspapers as to the demolition event. It was also on the radio and the primary school notified parents*
- *Posters in the windows of local businesses would have been helpful*
- *Regular weekly updates on the progress of the demolition in the local newspapers would be helpful for future notifications*

Warren accepted and apologised for the fact that some people were not aware of the event, despite Alcoa's efforts to widely publicise it. This feedback will be considered for future event notifications. Alcoa had placed advertorials in the local newspapers, emailed updates to approximately 200 people on the CCN database and has spoken openly about the demolition activity over a number of CCN meetings. Alcoa agreed to provide weekly updates on the demolition process in the local newspapers, including if there is any asbestos detected.

The current situation at the site involves an exclusion zone of 125 metres around the power station in the event of a premature but unexpected collapse. No movement of the structure has been detected to date, other than thermal cycling as the building heats and cools. Detailed structural assessments being undertaken will inform the steps required to complete the demolition. Asbestos monitoring will continue to be undertaken. The decision regarding the preferred methodology will be made in coming weeks and that the actual works are currently expected to occur 2-4 weeks after that.

Post meeting note: Starting 28 June, Alcoa has been placing weekly Community Updates in the Surf Coast Times, providing weekly email updates to its database and posting the updates at <http://www.alcoa.com/australia/en/anglesea/community-update-archive.asp>

Access to Information

A view was expressed by a CCN participant regarding transparency, openness and honesty in the provision of information to the community, particularly in relation to the expert reports and risk assessments that were undertaken prior to the demolition event so that the community can form its own views as to the risks that it has been exposed to.

In response, Warren reiterated that Alcoa ran a very comprehensive, highly regulated and robust asbestos identification and removal process. There is a range of parties, including Alcoa, several regulators, licenced contractors, qualified hygienists, and independent auditors who all have key roles to play. Warren stated that at this stage Alcoa has no intention of making the reports and risk assessments available to the community as it doesn't believe that it will add any value. He added that the data is provided to the regulators as required by them, but Alcoa considers that the copious pages of data can be summarised and presented to the community as he had done at this meeting.

Environmental Health and Safety

Warren reported that there had been one minor injury and three security incidents since the last meeting. There were no environmental non-compliances.

Mine Sump Water

The water level as at 1 June was sitting at almost 6% of the proposed eventual total volume. A pH reading of the mine sump was unable to be taken due to lack of access to the required testing equipment. Alcoa does not expect the pH to have changed significantly since the April reading of 3.7pH.

Decommissioning and Rehabilitation

Mine Rehabilitation and Closure Plan Update

Chris Rolland (**Mine Rehabilitation Supervisor**) advised that the 15-hectare rehabilitation works area completed so far is the largest in the site's history that has been rehabilitated in a season using the direct topsoil/subsoil relocation approach.

Anglesea Bike Park

Warren advised that Alcoa supports the community's interest in and desire to have a bike park in Anglesea and will extend the existing lease beyond 30 June 2018 to ensure a smooth transition. This is consistent with Alcoa's previous statements that it supports a smooth transition to a new location. It is likely to be 6 months (TBC) to allow sufficient time for the long-term future of the bike park to be determined. Contrary to recent media reports and statements made on social media, Alcoa will not 'send the bulldozers in' after 30 June.

A representative from the Anglesea Bike Park Committee advised that it is the Committee's preference that the bike park stays in its current location.

NEXT MEETING: Monday 13 August 2018, 6pm at the Senior Citizens Club, McMillan St, Anglesea
ALL WELCOME

The purpose of this document is to give community and other stakeholders a summary of what took place at the CCN meeting on Monday 18 June. For a full account of discussions at the meeting, email angleseaps@alcoa.com.au requesting a copy of the minutes.

The CCN, established in 2001, provides advice and feedback on issues relevant to Alcoa and assists it to be responsive to the needs and concerns of the community. For further information about Alcoa and any of the topics in this snapshot, visit www.alcoa.com.au/anglesea