

Huntly and Willowdale current mining operations

Operations continue with care and confidence.



Who we are and assessment background

Alcoa has been operating in Western Australia since 1963. Our Huntly and Willowdale mines send mined bauxite to our Pinjarra and Wagerup refineries where it's refined into alumina, the material used to make aluminium, a critical material for both everyday goods and its role in decarbonisation.

We are committed to responsible mining and environmental stewardship, ensuring operations align with leading practices and regulatory requirements.

In 2023, a third party referred our previous and ongoing operations at Huntly and Willowdale Mines to the Environmental Protection Authority (EPA), who decided to undertake a formal environmental assessment of parts of our these mining activities.

The Western Australian Government has granted Alcoa a conditional exemption which allows us to continue operations under our current approvals processes while the assessment is conducted.

What's being assessed

The assessment relates to elements of our 2022–2026 and 2023–2027 Mining and Management Programs, which outline our exploration, mining, rehabilitation and infrastructure plans for Huntly and Willowdale mines.

Activities being assessed include:

- Exploration drilling.
- Clearing of native vegetation.
- Establishment and use of haul roads and infrastructure.
- Mining, crushing and screening of bauxite ore.
- Transport of ore, including via conveyor.
- Rehabilitation of mined areas.

A different kind of assessment

This referral is for *previous* and *current* operations up until the end of 2027, which requires a tailored, or bespoke, approach to the assessment. We are using our existing knowledge and recently uplifted mitigation measures to outline our approach to managing impacts.

Our ongoing commitment

Alcoa remains committed to:

- Minimising our environmental footprint.
- Rehabilitating land progressively.
- Engaging openly with local communities and Traditional Owners.
- Meeting our environmental obligations.

Definitions

Disturbance – Proposed areas to be cleared

Rehabilitation – Areas under active or completed rehabilitation

Open Areas – Cleared land where rehabilitation hadn't started as of December 2023

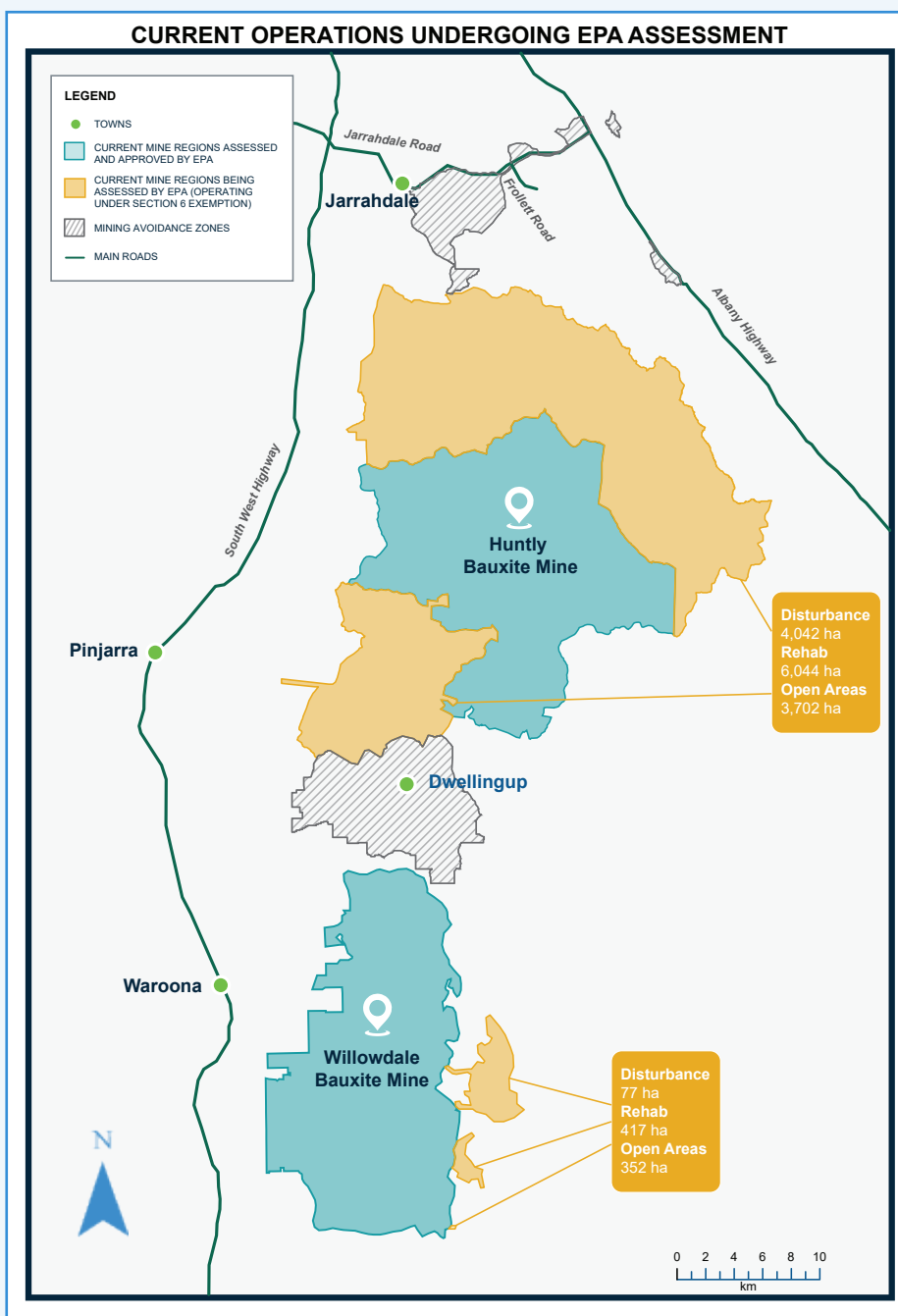
Assessment footprint and exploration activity

The assessment is across two development envelopes totalling 41,184 ha, with total proposed clearing around 10% of this area. Our disturbance footprint is based on the status of previous and proposed clearing as of December 2023.

	Huntly mine	Willowdale mine
Disturbance	4,042 ha	77 ha
Rehabilitation	6,044 ha	417 ha
Open areas	3,702 ha	352 ha
Total to be assessed	13,788 ha	846 ha

Within the 178,340 ha Exploration Development Envelope, we undertake exploration activities to define the extent of ore bodies and understand the location and quality of bauxite.

Our rigs are compact and specially designed to operate with minimal disturbance in forested areas, and no more than 105,000 low-impact drill holes are drilled each year.



What's next

We continue to operate responsibly under the current exemption and we're committed to transparent communication, ongoing consultation and continuous improvement throughout the life of the project.

Further information is available via our website, local information sessions and our local pop-up offices in Jarrahdale and Dwellingup. We welcome stakeholder and community comments. During this public comment period, comments can be made through the EPA's Public Consultation Hub at consultation.epa.wa.gov.au



Stay informed. Scan the QR code using your phone camera, visit our website www.alcoa.com/australia or contact us via alcoaofaustralia@alcoa.com or (08) 9316 5817. This information is available in other languages upon request.